

Cost-Effective Software Solutions to Industrial Corrosion

Corrosion Prediction Software and Corrosion Modeling Software Selection Guide

[Corrosion Prediction Software Selection by Industry](#)

[**Corrosion Prediction Software Selection by Corrosion Type**](#)

[Corrosion Prediction Software Selection by Service Environments](#)

[Alphabetical List of All Corrosion Prediction Software](#)

[**Request for Licensing Details**](#)

[Why WebCorr](#) | [Performance Guarantee](#) | [Unparalleled Functionality](#) | [Unmatched Usability](#) | [Any Device Any OS](#) | [Free Training & Support](#) | [CorrCompass](#)

Corrosion poses a major risk to many industrial facilities and structures such as pipelines, storage tanks, boilers, heat exchangers, and other equipment and systems. To estimate the design life or residual life of an industrial component, corrosion rate data for a given material-environment system must be known. WebCorr's high-value corrosion prediction software and corrosion modeling software can provide essential corrosion rate data to the design team, and the operation, inspection, and maintenance personnel, making possible a more realistic estimation of the design life or residual life of a component or asset in various industries. Click the software titles below for details and application examples of cost-effective software solutions to corrosion in every industry.

Which corrosion prediction software is best suited for this type of corrosion?

General Attack/Uniform Corrosion

Atmosphere-Compass: Prediction and Modeling of Atmospheric Corrosion of Metals and Alloys

Soil-Compass: Soil Corrosion Prediction and Modeling for Metals and Alloys

Seawater-Compass: Seawater Corrosion Prediction for Metals and Alloys



DWD-Compass: Modeling and Life Prediction of Corrosion in Drinking Water Distribution Systems

ACMF-Compass: Modeling and Prediction of the Effects of AC and Magnetic Field on Metal Corrosion

Concrete-Compass: Concrete Corrosion Prediction and Modeling

CRA-Compass: Corrosion Modeling and Corrosion Prediction for Corrosion Resistant Alloys - the Threshold Temperature and Chloride Concentration for Pitting, Crevice Corrosion, and Stress Corrosion Cracking (SCC)

VPC-Compass: Prediction and Modeling of Internal Corrosion in Vapor Phase in Closed Systems

CP-Compass: Cathodic Protection Design Calculations, Verification, Assessment and Solution

CUI-Compass: Prediction and Risk Assessment of Corrosion Under Insulation and Fireproofing

PCW-Compass: Corrosion Prediction and Modeling in Process Cooling Water Systems

PipelineCompass: Pipeline Corrosion Modeling, Prediction, Assessment and Solutions

O2Compass: Modeling and Prediction of High Temperature Oxidation

FuelAsh-Compass: Fuel Ash Corrosion Modeling and Life Prediction of Boiler and Heater Tubes

H2SO4-Compass: Corrosion Prediction and Materials Selection Guide for H2SO4 Services

HCl-Compass: Corrosion Prediction and Materials Selection Guide for HCl Services

HF-Compass: Corrosion Prediction and Materials Selection Guide for HF Services

Dew-Point-Compass: Prediction of Dew Point Temperatures of Flue Gases and the Risk of Dew Point Corrosion

SC-Compass: Stray Current Corrosion and AC Corrosion - Identification, Assessment and Prediction

CO2Compass: Modeling and Prediction of Corrosion by Carbon Dioxide (CO₂), Hydrogen Sulfide (H₂S), Acetic Acid (HAc), Elemental Sulfur (S), and Mercury (Hg) in Oil and Gas Pipelines and Production Tubing.

OCTG-Compass: Corrosion Prediction and CRA Materials Selection Guide for Oil and Gas Production Systems

ACE - Apps for Corrosion Engineers: A Collection of Essential Corrosion Software Applications for Corrosion Engineers, Corrosion Researchers, and Corrosion Technicians in Laboratories and in Fields.

Galvanic Corrosion



GC-Compass: Galvanic Corrosion Prediction and Materials Compatibility Assessment

CIPAL-Compass: Copper-Induced Pitting in Aluminium Alloys - Modeling, Life Prediction and Process Control

CP-Compass: Cathodic Protection Design Calculations, Verification, Assessment and Solutions

Atmosphere-Compass: Prediction and Modeling of Atmospheric Corrosion of Metals and Alloys

VPC-Compass: Prediction and Modeling of Internal Corrosion in Vapor Phase in Closed Systems

SC-Compass: Stray Current Corrosion and AC Corrosion - Identification, Assessment and Prediction

PCW-Compass: Corrosion Prediction and Modeling in Process Cooling Water Systems

HCl-Compass: Corrosion Prediction and Materials Selection Guide for HCl Services

HF-Compass: Corrosion Prediction and Materials Selection Guide for HF Services

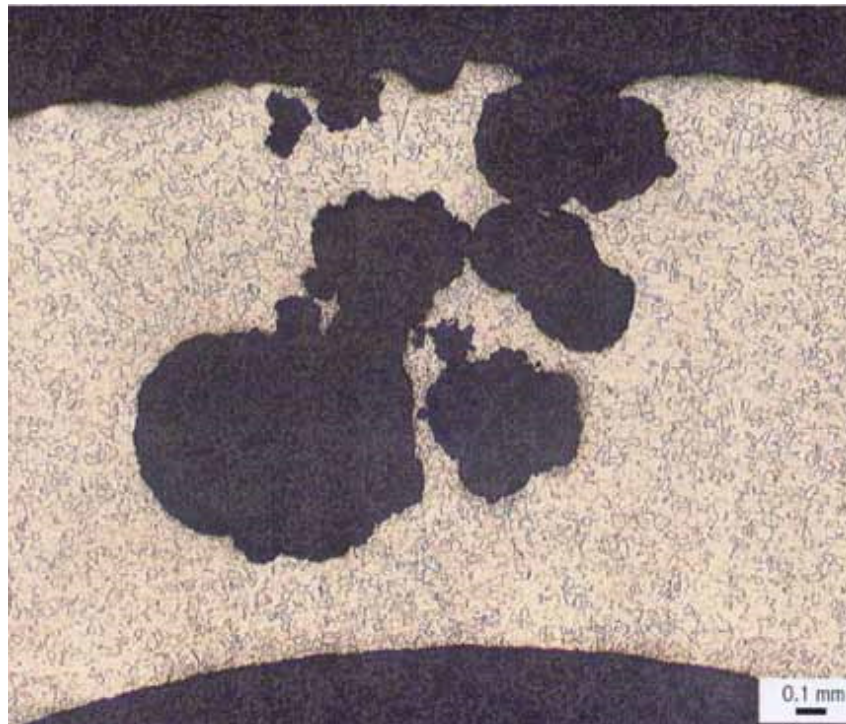
Soil-Compass: Soil Corrosion Prediction and Modeling for Metals and Alloys

Seawater-Compass: Seawater Corrosion Prediction for Metals and Alloys

Concrete-Compass: Concrete Corrosion Prediction and Modeling

ACE - Apps for Corrosion Engineers: A Collection of Essential Corrosion Software Applications for Corrosion Engineers, Corrosion Researchers, and Corrosion Technicians in Laboratories and in Fields.

Pitting Corrosion



CRA-Compass: Corrosion Modeling and Corrosion Prediction for Corrosion Resistant Alloys - the Threshold Temperature and Chloride Concentration for Pitting, Crevice Corrosion, and Stress Corrosion Cracking (SCC)

HCl-Compass: Corrosion Prediction and Materials Selection Guide for HCl Services

Soil-Compass: Soil Corrosion Prediction and Modeling for Metals and Alloys

Seawater-Compass: Seawater Corrosion Prediction for Metals and Alloys

DWD-Compass: Modeling and Life Prediction of Corrosion in Drinking Water Distribution Systems

Concrete-Compass: Concrete Corrosion Prediction and Modeling

CUI-Compass: Prediction and Risk Assessment of Corrosion Under Insulation and Fireproofing

Dew-Point-Compass: Prediction of Dew Point Temperatures of Flue Gases and the Risk of Dew Point Corrosion

CIPAL-Compass: Copper-Induced Pitting in Aluminium Alloys - Modeling, Life Prediction and Process Control

PCW-Compass: Corrosion Prediction and Modeling in Process Cooling Water Systems

HCl-Compass: Corrosion Prediction and Materials Selection Guide for HCl Services

HF-Compass: Corrosion Prediction and Materials Selection Guide for HF Services

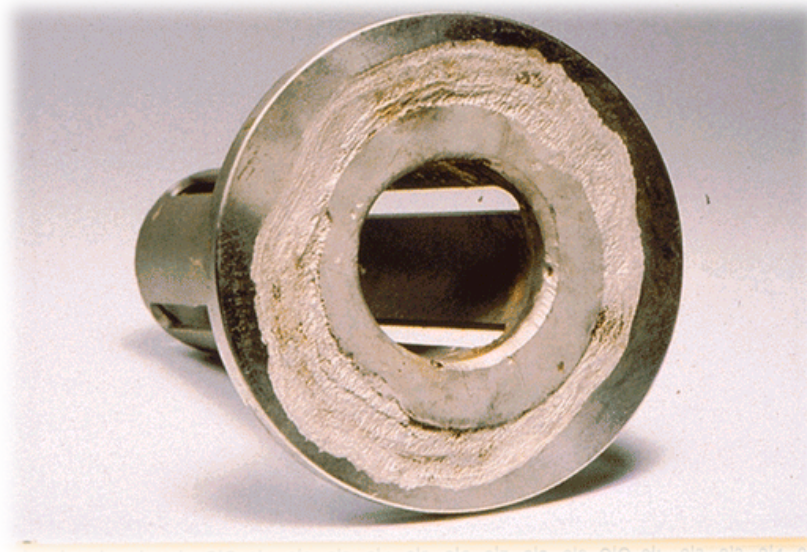
Atmosphere-Compass: Prediction and Modeling of Atmospheric Corrosion of Metals and Alloys

VPC-Compass: Prediction and Modeling of Internal Corrosion in Vapor Phase in Closed Systems

CO2Compass: Modeling and Prediction of Corrosion by Carbon Dioxide (CO₂), Hydrogen Sulfide (H₂S), Acetic Acid (HAc), Elemental Sulfur (S), and Mercury (Hg) in Oil and Gas Pipelines and Production Tubing.

EVS-Compass: Extreme Value Statistics in Corrosion Modeling and Corrosion Life Prediction of Structures and Plant Assets

Crevice Corrosion / Filiform Corrosion



CRA-Compass: Corrosion Modeling and Corrosion Prediction for Corrosion Resistant Alloys - the Threshold Temperature and Chloride Concentration for Pitting, Crevice Corrosion, and Stress Corrosion Cracking (SCC)

CO2Compass: Modeling and Prediction of Corrosion by Carbon Dioxide (CO₂), Hydrogen Sulfide (H₂S), Acetic Acid (HAc), Elemental Sulfur (S), and Mercury (Hg) in Oil and Gas Pipelines and Production Tubing.

CUI-Compass: Prediction and Risk Assessment of Corrosion Under Insulation and Fireproofing

Dew-Point-Compass: Prediction of Dew Point Temperatures of Flue Gases and the Risk of Dew Point Corrosion

Atmosphere-Compass: Prediction and Modeling of Atmospheric Corrosion of Metals and Alloys

Soil-Compass: Soil Corrosion Prediction and Modeling for Metals and Alloys

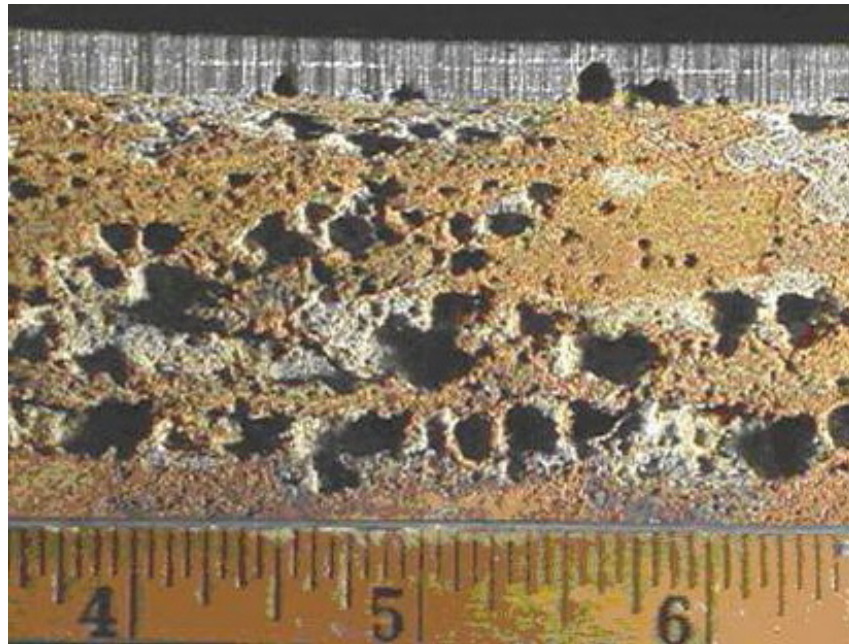
Seawater-Compass: Seawater Corrosion Prediction for Metals and Alloys

Concrete-Compass: Concrete Corrosion Prediction and Modeling

DWD-Compass: Modeling and Life Prediction of Corrosion in Drinking Water Distribution Systems

VPC-Compass: Prediction and Modeling of Internal Corrosion in Vapor Phase in Closed Systems

CO₂/H₂S/HAc Corrosion



PCW-Compass: Corrosion Prediction and Modeling in Process Cooling Water Systems

EVS-Compass: Extreme Value Statistics in Corrosion Modeling and Corrosion Life Prediction of Structures and Plant Assets

CO₂Compass: Modeling and Prediction of Corrosion by Carbon Dioxide (CO₂), Hydrogen Sulfide (H₂S), Acetic Acid (HAc), Elemental Sulfur (S), and Mercury (Hg) in Oil and Gas Pipelines and Production Tubing.

OCTG-Compass: Corrosion Prediction and CRA Materials Selection Guide for Oil and Gas Production Systems

ISO15156-Compass: Modeling and Prediction of in-situ pH, Region of Environmental Severity, and Susceptibility to Sulfide Stress Cracking (SSC) of Carbon and Low Alloy Steels

PCW-Compass: Corrosion Prediction and Modeling in Process Cooling Water Systems

CP-Compass: Cathodic Protection Design Calculations, Verification, Assessment and Solutions.

CRA-Compass: Corrosion Modeling and Corrosion Prediction for Corrosion Resistant Alloys - the Threshold Temperature and Chloride Concentration for Pitting, Crevice Corrosion, and Stress Corrosion Cracking (SCC).

ABC-Compass: Ammonium Bisulfide Corrosion Modeling and Life Prediction

GC-Compass: Galvanic Corrosion Prediction and Materials Compatibility Assessment

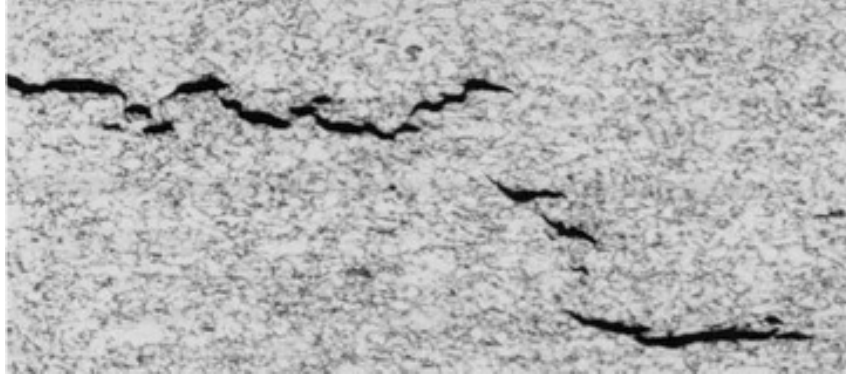
Soil-Compass: Soil Corrosion Prediction and Modeling for Metals and Alloys

Seawater-Compass: Seawater Corrosion Prediction for Metals and Alloys

PipelineCompass: Pipeline Corrosion Modeling, Prediction, Assessment and Solutions

EVS-Compass: Extreme Value Statistics in Corrosion Modeling and Corrosion Life Prediction of Structures and Plant Assets

Environmental Cracking:
SCC/HIC/SWC/HSC/SSC/SOHIC/SZC/HB/HE



ACE - Apps for Corrosion Engineers: A Collection of Essential Corrosion Software Applications for Corrosion Engineers, Corrosion Researchers, and Corrosion Technicians in Laboratories and in Fields.

CRA-Compass: Corrosion Modeling and Corrosion Prediction for Corrosion Resistant Alloys - the Threshold Temperature and Chloride Concentration for Pitting, Crevice Corrosion, and Stress Corrosion Cracking (SCC)

ISO15156-Compass: Modeling and Prediction of in-situ pH, Region of Environmental Severity, and Susceptibility to Sulfide Stress Cracking (SSC) of Carbon and Low Alloy Steels

HCl-Compass: Corrosion Prediction and Materials Selection Guide for HCl Services

PCW-Compass: Corrosion Prediction and Modeling in Process Cooling Water Systems

H2Compass: Modeling and Prediction of Low Temperature Hydrogen Damages (Hydrogen Blistering, Hydrogen-Induced Cracking, Hydrogen Embrittlement) and High Temperature Hydrogen Attack (HTHA)

S-Compass: Modeling and Prediction of High Temperature Sulfidation/Sulfidic Corrosion/H₂-H₂S Corrosion and Low Temperature Elemental Sulfur Corrosion

NAC-Compass: Modeling and Prediction of High Temperature Naphthenic Acid Corrosion

FuelAsh-Compass: Fuel Ash Corrosion Modeling and Life Prediction of Boiler and Heater Tubes

ABC-Compass: Ammonium Bisulfide Corrosion Modeling and Life Prediction

CCC-Compass: Modeling and Prediction of Caustic Corrosion and Caustic Stress Corrosion Cracking

HCl-Compass: Corrosion Prediction and Materials Selection Guide for HCl Services

HF-Compass: Corrosion Prediction and Materials Selection Guide for HF Services

CUI-Compass: Prediction and Risk Assessment of Corrosion Under Insulation and Fireproofing

CP-Compass: Cathodic Protection Design Calculations, Verification, Assessment and Solutions

PipelineCompass: Pipeline Corrosion Modeling, Prediction, Assessment and Solutions

Soil-Compass: Soil Corrosion Prediction and Modeling for Metals and Alloys

Seawater-Compass: Seawater Corrosion Prediction for Metals and Alloys

Concrete-Compass: Concrete Corrosion Prediction and Modeling

Stray Current Corrosion and AC Corrosion



SC-Compass: Stray Current Corrosion and AC Corrosion - Identification, Assessment and Prediction

ACMF-Compass: Modeling and Prediction of the Effects of AC and Magnetic Field on Metal Corrosion

Soil-Compass: Soil Corrosion Prediction and Modeling for Metals and Alloys

Seawater-Compass: Seawater Corrosion Prediction for Metals and Alloys

Concrete-Compass: Concrete Corrosion Prediction and Modeling

CP-Compass: Cathodic Protection Design Calculations, Verification, Assessment and Solutions

PipelineCompass: Pipeline Corrosion Modeling, Prediction, Assessment and Solutions

Atmosphere-Compass: Prediction and Modeling of Atmospheric Corrosion of Metals and Alloys

GC-Compass: Galvanic Corrosion Prediction and Materials Compatibility Assessment

VPC-Compass: Prediction and Modeling of Internal Corrosion in Vapor Phase in Closed Systems

Erosion Corrosion and Flow-Accelerated Corrosion (FAC)



Caustic Corrosion and Caustic Stress Cracking

EVS-Compass: Extreme Value Statistics in Corrosion Modeling and Corrosion Life Prediction of Structures and Plant Assets

FAC-Compass: Erosion Corrosion and Flow - Accelerated Corrosion Modeling, Life Prediction and Materials Selection in Water-Steam Systems

PCW-Compass: Corrosion Prediction and Modeling in Process Cooling Water Systems

DWD-Compass: Modeling and Life Prediction of Corrosion in Drinking Water Distribution Systems

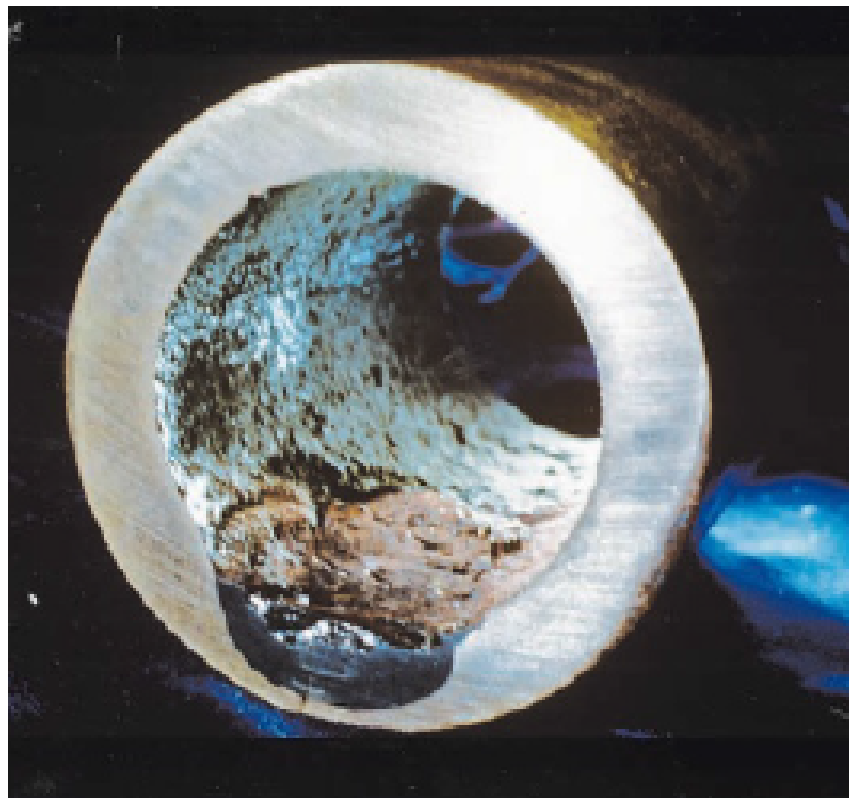
CRA-Compass: Corrosion Modeling and Corrosion Prediction for Corrosion Resistant Alloys - the Threshold Temperature and Chloride Concentration for Pitting, Crevice Corrosion, and Stress Corrosion Cracking (SCC)

Seawater-Compass: Seawater Corrosion Prediction for Metals and Alloys

CCC-Compass: Modeling and Prediction of Caustic Corrosion and Caustic Stress Corrosion Cracking

CRA-Compass: Corrosion Modeling and Corrosion Prediction for Corrosion Resistant Alloys - the Threshold Temperature and Chloride Concentration for Pitting, Crevice Corrosion, and Stress Corrosion Cracking (SCC)

PCW-Compass: Corrosion Prediction and Modeling in Process Cooling Water Systems



Naphthenic Acid Corrosion (NAC)

NAC-Compass: Modeling and Prediction of High Temperature Naphthenic Acid Corrosion



S-Compass: Modeling and Prediction of High Temperature Sulfidation/Sulfidic Corrosion/H₂-H₂S Corrosion and Low Temperature Elemental Sulfur Corrosion

ABC-Compass: Ammonium Bisulfide Corrosion Modeling and Life Prediction

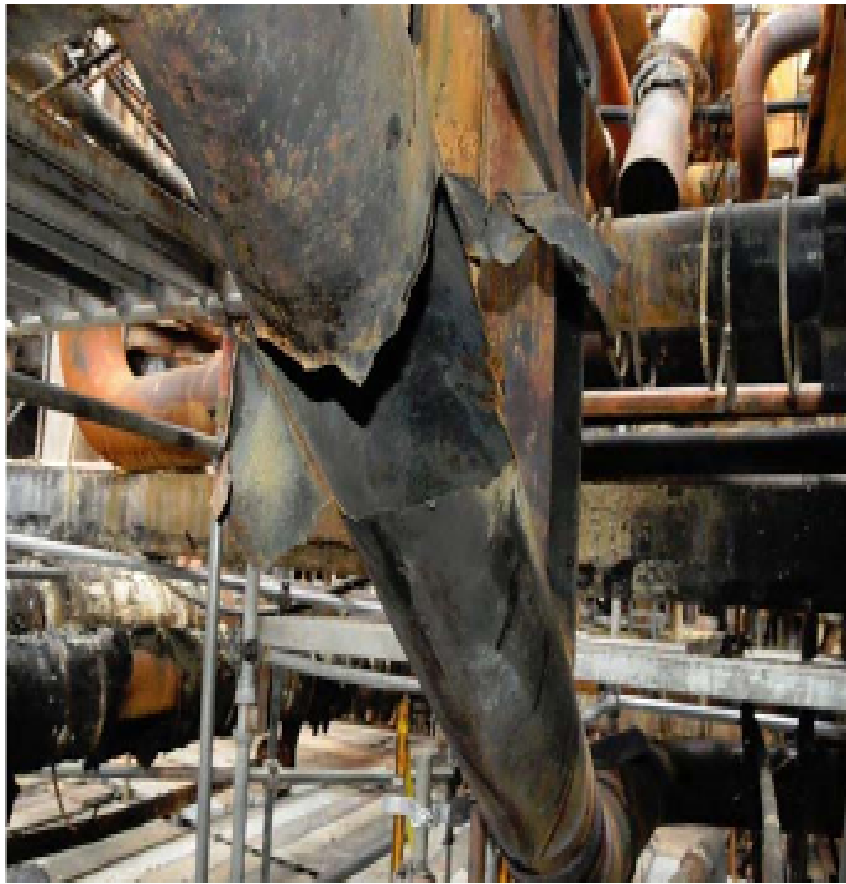
High Temperature Sulfidation/Sulfidic Corrosion, H₂-H₂S Corrosion, Elemental Sulfur Corrosion

S-Compass: Modeling and Prediction of High Temperature Sulfidation/Sulfidic Corrosion/H₂-H₂S Corrosion and Low Temperature Elemental Sulfur Corrosion

NAC-Compass: Modeling and Prediction of High Temperature Naphthenic Acid Corrosion

NH3Compass: Modeling and Prediction of Corrosion in Ammonia Production, Storage, and Transport

O2Compass: Modeling and Prediction of High Temperature Oxidation

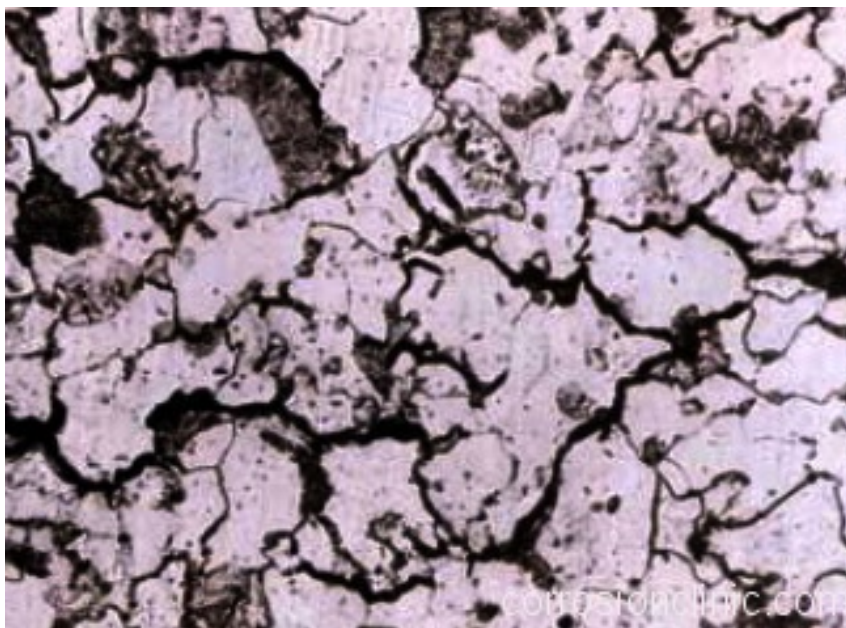


CSR-Compass: Modeling and Remaining Life Prediction of Creep and Stress Rupture of Boiler and Heater Tubes

FuelAsh-Compass: Fuel Ash Corrosion Modeling and Life Prediction of Boiler and Heater Tubes

ABC-Compass: Ammonium Bisulfide Corrosion Modeling and Life Prediction

Low Temperature Hydrogen Damages
(Hydrogen Blistering, Hydrogen-Induced
Cracking, Hydrogen Embrittlement) and
High Temperature Hydrogen Attack (HTHA)



H2Compass: Modeling and Prediction of Low Temperature Hydrogen Damages (Hydrogen Blistering, Hydrogen-Induced Cracking, Hydrogen Embrittlement) and High Temperature Hydrogen Attack (HTHA)

S-Compass: Modeling and Prediction of High Temperature Sulfidation/Sulfidic Corrosion/H₂-H₂S Corrosion and Low Temperature Elemental Sulfur Corrosion

NAC-Compass: Modeling and Prediction of High Temperature Naphthenic Acid Corrosion

CCC-Compass: Modeling and Prediction of Caustic Corrosion and Caustic Stress Corrosion Cracking

HCl-Compass: Corrosion Prediction and Materials Selection Guide for HCl Services

HF-Compass: Corrosion Prediction and Materials Selection Guide for HF Services

O2Compass: Modeling and Prediction of High Temperature Oxidation

CSR-Compass: Modeling and Remaining Life Prediction of Creep and Stress Rupture of Boiler and Heater Tubes

High Temperature Oxidation, High
Temperature Fuel Ash Corrosion



High Temperature Creep and Stress Rupture

Seawater-Compass: Seawater Corrosion Prediction for Metals and Alloys

Concrete-Compass: Concrete Corrosion Prediction and Modeling

PCW-Compass: Corrosion Prediction and Modeling in Process Cooling Water Systems

O2Compass: Modeling and Prediction of High Temperature Oxidation

CSR-Compass: Modeling and Remaining Life Prediction of Creep and Stress Rupture of Boiler and Heater Tubes

H2Compass: Modeling and Prediction of Low Temperature Hydrogen Damages (Hydrogen Blistering, Hydrogen-Induced Cracking, Hydrogen Embrittlement) and High Temperature Hydrogen Attack (HTHA)

FuelAsh-Compass: Fuel Ash Corrosion Modeling and Life Prediction of Boiler and Heater Tubes

CSR-Compass: Modeling and Remaining Life Prediction of Creep and Stress Rupture of Boiler and Heater Tubes

O2Compass: Modeling and Prediction of High Temperature Oxidation

FuelAsh-Compass: Fuel Ash Corrosion Modeling and Life Prediction of Boiler and Heater Tubes



Atmospheric Corrosion



Atmosphere-Compass: Prediction and Modeling of Atmospheric Corrosion of Metals and Alloys

GC-Compass: Galvanic Corrosion Prediction and Materials Compatibility Assessment

VPC-Compass: Prediction and Modeling of Internal Corrosion in Vapor Phase in Closed Systems

VPC-Compass-SE: Prediction and Modeling of Corrosion in Microelectronic Packages

CRA-Compass: Corrosion Modeling and Corrosion Prediction for Corrosion Resistant Alloys - the Threshold Temperature and Chloride Concentration for Pitting, Crevice Corrosion, and Stress Corrosion Cracking (SCC)

CUI-Compass: Prediction and Risk Assessment of Corrosion Under Insulation and Fireproofing

FuelAsh-Compass: Fuel Ash Corrosion Modeling and Life Prediction of Boiler and Heater Tubes

Seawater Corrosion

Seawater-Compass: Seawater Corrosion Prediction for Metals and Alloys

Shipwreck-Compass: Shipwreck Corrosion Modeling and Corrosion Prediction



CP-Compass: Cathodic Protection Design Calculations, Verification, Assessment and Solutions

Concrete-Compass: Concrete Corrosion Prediction and Modeling

Atmosphere-Compass: Prediction and Modeling of Atmospheric Corrosion of Metals and Alloys

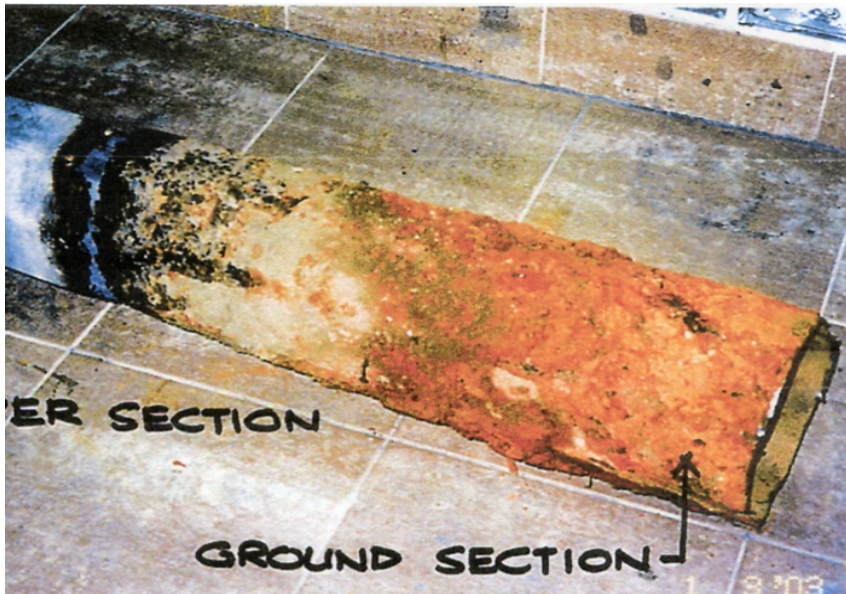
GC-Compass: Galvanic Corrosion Prediction and Materials Compatibility Assessment

CRA-Compass: Corrosion Modeling and Corrosion Prediction for Corrosion Resistant Alloys - the Threshold Temperature and Chloride Concentration for Pitting, Crevice Corrosion, and Stress Corrosion Cracking (SCC)

ACMF-Compass: Modeling and Prediction of the Effects of AC and Magnetic Field on Metal Corrosion

PCW-Compass: Corrosion Prediction and Modeling in Process Cooling Water Systems

Soil Corrosion



Soil-Compass: Soil Corrosion Prediction and Modeling for Metals and Alloys

CP-Compass: Cathodic Protection Design Calculations, Verification, Assessment and Solutions

PipelineCompass: Pipeline Corrosion Modeling, Prediction, Assessment and Solutions

SC-Compass: Stray Current Corrosion and AC Corrosion - Identification, Assessment and Prediction

ACMF-Compass: Modeling and Prediction of the Effects of AC and Magnetic Field on Metal Corrosion

Concrete-Compass: Concrete Corrosion Prediction and Modeling

Atmosphere-Compass: Prediction and Modeling of Atmospheric Corrosion of Metals and Alloys

GC-Compass: Galvanic Corrosion Prediction and Materials Compatibility Assessment

Concrete Corrosion



CRA-Compass: Corrosion Modeling and Corrosion Prediction for Corrosion Resistant Alloys - the Threshold Temperature and Chloride Concentration for Pitting, Crevice Corrosion, and Stress Corrosion Cracking (SCC)

PCW-Compass: Corrosion Prediction and Modeling in Process Cooling Water Systems

Concrete-Compass: Concrete Corrosion Prediction and Modeling

Soil-Compass: Soil Corrosion Prediction and Modeling for Metals and Alloys

SC-Compass: Stray Current Corrosion and AC Corrosion - Identification, Assessment and Prediction

Atmosphere-Compass: Prediction and Modeling of Atmospheric Corrosion of Metals and Alloys

GC-Compass: Galvanic Corrosion Prediction and Materials Compatibility Assessment

CRA-Compass: Corrosion Modeling and Corrosion Prediction for Corrosion Resistant Alloys - the Threshold Temperature and Chloride Concentration for Pitting, Crevice Corrosion, and Stress Corrosion Cracking (SCC)

Alphabetical List of All Corrosion Prediction and Corrosion Modeling Software

- **ABC-Compass:** Ammonium Bisulfide Corrosion Modeling and Life Prediction
- **ACE - Apps for Corrosion Engineers:** A Collection of Essential Corrosion Software Applications for Corrosion Engineers, Corrosion Researchers, and Corrosion Technicians in Laboratories and in Fields
- **ACMF-Compass:** Modeling and Prediction of the Effects of AC and Magnetic Field on Metal Corrosion
- **Atmosphere-Compass:** Prediction and Modeling of Atmospheric Corrosion of Metals and Alloys
- **CCC-Compass:** Modeling and Prediction of Caustic Corrosion and Caustic Stress Corrosion Cracking
- **CIPAL-Compass:** Copper-Induced Pitting in Aluminium Alloys - Modeling, Life Prediction and Process Control
- **Cl2Compass:** Modeling and Prediction of Corrosion by Dry Chlorine Gas
- **CO2Compass:** Modeling and Prediction of Corrosion by Carbon Dioxide (CO₂), Hydrogen Sulfide (H₂S), Acetic Acid (HAc), Elemental Sulfur (S), and Mercury (Hg) in Oil and Gas Pipelines and Production Tubing
- **Concrete-Compass:** Concrete Corrosion Prediction and Modeling
- **CP-Compass-Pipeline:** Cathodic Protection Design Calculations, Verification, Assessment and Solution for Underground Pipelines

- **CP-Compass-Concrete:** Design Calculations for Cathodic Protection of Reinforced Concrete Structures
- **CRA-Compass:** Corrosion Modeling and Corrosion Prediction for Corrosion Resistant Alloys - the Threshold Temperature and Chloride Concentration for Pitting, Crevice Corrosion, and Stress Corrosion Cracking (SCC)
- **CSR-Compass:** Modeling and Remaining Life Prediction of Creep and Stress Rupture of Boiler and Heater Tubes
- **CUI-Compass:** Prediction and Risk Assessment of Corrosion Under Insulation and Fireproofing
- **Dew-Point-Compass:** Prediction of Dew Point Temperatures of Flue Gases and the Risk of Dew Point Corrosion
- **DWD-Compass:** Modeling and Life Prediction of Corrosion in Drinking Water Distribution Systems
- **EN-Compass:** Modeling and Prediction of the Corrosion Resistant Properties of Electroless Nickel Coatings
- **EVS-Compass:** Extreme Value Statistics in Corrosion Modeling and Corrosion Life Prediction of Structures and Plant Assets
- **F2Compass:** Modeling and Prediction of Corrosion by Dry Fluorine Gas
- **FAC-Compass:** Erosion Corrosion and Flow - Accelerated Corrosion Modeling, Life Prediction and Materials Selection in Water-Steam Systems
- **FuelAsh-Compass:** Fuel Ash Corrosion Modeling and Life Prediction of Boiler and Heater Tubes
- **GC-Compass:** Galvanic Corrosion Prediction and Materials Compatibility Assessment
- **H2Compass:** Modeling and Prediction of Low Temperature Hydrogen Damages (Hydrogen Blistering, Hydrogen-Induced Cracking, Hydrogen Embrittlement) and High Temperature Hydrogen Attack (HTHA)
- **H2O-Compass:** Modeling and Prediction of Water Corrosivity and Scaling Tendency
- **H2SO4-Compass:** Corrosion Prediction and Materials Selection Guide for H2SO4 Services
- **HCl-Compass:** Corrosion Prediction and Materials Selection Guide for HCl Services
- **HF-Compass:** Corrosion Prediction and Materials Selection Guide for HF Services
- **HBr-Compass:** Corrosion Prediction and Materials Selection Guide for Hydrobromic Acid (HBr) Services
- **ISO15156-Compass:** Modeling and Prediction of in-situ pH, Region of Environmental Severity, and Susceptibility to Sulfide Stress Cracking (SSC) of Carbon and Low Alloy Steels
- **MIC-Compass:** Modeling and Prediction of Microbiologically Influenced Corrosion in Oil and Gas Pipelines
- **NAC-Compass:** Modeling and Prediction of High Temperature Naphthenic Acid Corrosion
- **NH3Compass:** Modeling and Prediction of Corrosion in Ammonia Production, Storage, and Transport
- **O2Compass:** Modeling and Prediction of High Temperature Oxidation
- **OCTG-Compass:** Corrosion Prediction and CRA Materials Selection Guide for Oil and Gas Production Systems
- **PCW-Compass:** Corrosion Prediction and Modeling in Process Cooling Water Systems
- **PipelineCompass:** Pipeline Corrosion Modeling, Prediction, Assessment and Solutions
- **S-Compass:** Modeling and Prediction of High Temperature Sulfidation/Sulfidic Corrosion/H₂-H₂S Corrosion and Low Temperature Elemental Sulfur Corrosion
- **SC-Compass:** Stray Current Corrosion and AC Corrosion - Identification, Assessment and Prediction
- **Seawater-Compass:** Seawater Corrosion Prediction for Metals and Alloys
- **Shipwreck-Compass:** Shipwreck Corrosion Modeling and Corrosion Prediction
- **Soil-Compass:** Soil Corrosion Prediction and Modeling for Metals and Alloys
- **VPC-Compass:** Prediction and Modeling of Internal Corrosion in Vapor Phase in Closed Systems
- **VPC-Compass-SE:** Prediction and Modeling of Corrosion in Microelectronic Packages

- **WebCorr Corrosion Rate Units Converter:** Converting Between All Corrosion Rate Units for All Metals and Alloys

Each and every one of WebCorr's corrosion prediction and modeling software was developed at the request of our clients worldwide. Our clients' inputs and specific requirements help make our corrosion software always stay relevant, practical, and directly applicable to the various systems, processes and industries. If you cannot find a corrosion prediction software of your interest from the list above, please let us know and we will work with you to customize an existing software or develop a new one to meet your specific requirements.

Request for Licensing Details

Why You Should Consider WebCorr WebCorr Corrosion Consulting Services is in the corrosion consultancy business. Corrosion prediction and corrosion modeling are integral parts of our expertise and strength. WebCorr has developed 40 integrated predictive software programs for corrosion prediction and corrosion modeling, cementing a CorrCompass-based ecosystem covering all types of corrosion in every industry and service environment. Extensive field data from our corrosion consulting work help keep the predictive engines in our corrosion software always accurate, up-to-date, and directly applicable to the various systems, processes and industries. Unlike other corrosion prediction software and corrosion modeling software developed by computer programmers, mechanical engineers, metallurgists or chemists, WebCorr's corrosion prediction software and corrosion modeling software are developed by NACE certified Corrosion Specialists with both BEng and PhD degrees in corrosion and decades of practical corrosion experience. The WebCorr team knows corrosion from inside out. We are so confident with the accuracy of the prediction by WebCorr's corrosion prediction software and corrosion modeling software that we offer performance guarantee.

Performance Guarantee WebCorr is the only corrosion software developer who offers performance guarantee. If at any time during the licensing period, the corrosion rates predicted by WebCorr's corrosion prediction software and corrosion modeling software are not closer to the measured values than the values predicted by any other corrosion prediction and corrosion modeling software on the market, we will refund the pro-rated licensing fee to you. It is that simple. No other corrosion prediction software and corrosion modeling software developer offers you this performance guarantee.

Unparalleled Functionality WebCorr's corrosion prediction software and corrosion modeling software utilize machine learning and cloud computing to optimize the predictive engines such that all contributing factors to the corrosion process are accurately processed. The prediction and modeling results are validated against field data and lab data. Take CO₂ corrosion modeling as an example, traditional CO₂ corrosion modeling software is limited in their capability to the prediction of the corrosion rate only, without due consideration to the CO₂ corrosion control strategy under the prevailing operating conditions of a pipeline or production tubing. WebCorr's CO₂Compass, the next

generation CO2 corrosion modeling software goes far beyond the prediction of the corrosion rate, it utilizes machine learning and cloud computing to optimize a particular CO2 corrosion control strategy with specific and quantitative control targets under the prevailing operating conditions of a pipeline or production tubing. Significant cost savings can be realized for asset owners at both the design and operation phases of pipelines. CO2Compass is not just for CO2 corrosion rate prediction, it also provides users with expert guidance on practical solutions for mitigating CO2 corrosion. Based on the predicted corrosion rate, the prevailing operating conditions, the flow regimes, and the water analysis results, CO2Compass makes an overall assessment of the complete system and generates recommendations for CO2 corrosion mitigation strategies. [Click here to read more on CO2Compass, the next generation CO2 corrosion prediction and CO2 corrosion modeling software.](#)

Unmatched Usability WebCorr' CorrCompass suites of corrosion software are designed with end users in mind. Experience the industry's first cross-platform and device-independent corrosion modeling and corrosion prediction applications on your iPads, tablets, smart phones, notebooks and desktops, at any time and anywhere, in the office or in the field. No installation files to download, no browser plug-ins required, no USB dongles to carry around, and no license keys to transfer from one PC to another. **WebCorr's Compass series of software simply works on any device running any OS.** All you need is an internet browser. The predictive engines in the Compass software perform calculations in the cloud, with real-time display of prediction results and graphical charts. Unlike the black-box style of other corrosion modeling software, WebCorr's Compass series of corrosion software gives the user complete and direct control over the modeling of the effects of all parameters contributing to corrosion. Take CO2 corrosion modeling for example, CO2Compass gives the user complete and direct control over the modeling of the effects of scaling, oil wetting, glycol, CO2 fugacity, in-situ pH, liquid velocity, organic acids, and H2S with user-controlled ON/OFF switches, and direct inputs overriding the default settings. No other CO2 corrosion modeling software gives you all of these controls. Automatically generated and dynamically updated graphs are plotted in real-time as the user makes adjustments to the input parameters. These plots include corrosion rate profile, effect of temperature, effect of velocity, and effect of pH on the predicted CO2 corrosion rates. Saturation indices of carbonates and sulphate scales are also plotted. A clean and concise report is automatically generated and dynamically updated in real-time as you enter or change the input parameters. [Click here to read more on CO2Compass, the next generation CO2 corrosion prediction and CO2 corrosion modeling software.](#)

Any Device Any OS WebCorr's Compass series of corrosion software simply works on any device running any OS. All you need is an internet browser. You can run the corrosion prediction and corrosion modeling software on your tablets, notebooks and desktops, at any time and anywhere, in the office or in the field. There are no installation files to download and install, no browser plugins required, no USB

dongles to carry around, and no license keys to transfer from one PC to another. Just login with your username and password, enter your data and print out the report.

Free Training and Technical Support Your initial 1-year license comes with free training in our Singapore office for 2 persons from your company. Fees for additional persons or on-site training at your company will be quoted on request.

Unlike other corrosion prediction software developer who charges maintenance support fees, WebCorr Corrosion Consulting Services provides free technical support to our customers. Our Compass series of software utilizes cloud computing and every time when you login to the software portal, you are using the most up-to-date version. There is no need for end users to download or apply any update.

WebCorr provides comprehensive corrosion consulting, corrosion training and corrosion expert witness services across the globe. If required, WebCorr can carry out the corrosion modeling, corrosion prediction, corrosion simulation, review and validation of reports/designs/calculations for your company, at a fee to be quoted on request.

WebCorr has provided the following corrosion prediction and corrosion modeling services for our clients:

- CO₂ Corrosion prediction and CO₂ corrosion modeling in oil and gas pipelines and production tubing.
- H₂S Corrosion prediction and H₂S corrosion modeling in oil and gas pipelines and production tubing.
- Corrosion prediction and corrosion modeling of bottom of line corrosion (BOL or BLC) in multiphase flow pipelines.
- Corrosion prediction and corrosion modeling of top of line corrosion (TOL or TLC) in multiphase flow pipelines.
- Corrosion prediction and corrosion modeling of internal pitting corrosion in pipelines.
- Corrosion prediction and corrosion modeling of external pitting corrosion of buried pipelines.
- Corrosion prediction and corrosion modeling of the effects of chemical treatment and corrosion inhibitors on the corrosion rate of specific alloys.
- Corrosion prediction and corrosion modeling of corrosion in chemical process and pharmaceutical industries
- Corrosion prediction and corrosion modeling of the effects of process pressure, velocity (flow rate) and temperature (PVT) on the corrosion rate of steels and alloys.
- Independent 3rd party verification/validation of modeled/predicted corrosion growth rates. At WebCorr, our NACE certified Corrosion Specialist will validate your modeled/predicted corrosion growth rates using properly selected models, laboratory test results and field data in the literature. Our verification/validation report will come complete with all supporting data and reference documents. If

necessary, we can train your engineers on CO2 corrosion modeling. Click the link below to see details on our 5-day training course on CO2 corrosion modeling:

CO2 Corrosion Modeling for the Prediction of Internal Corrosion in Oil Gas Pipelines and Production Tubing.

- CO2 Corrosion Model Validation Matrix and CO2 Corrosion Model Validation Index Score (CO2MoVIS).
- Corrosion and remaining life prediction of a shipwreck.

In the case illustrated below, corrosion modeling is the only solution to establish the safe operation limits (temperature, concentrations of impurities) for the tanks carrying phosphoric acid.

Sent: Wednesday, March 17, 2010 1:47 PM

To: WebCorr Corrosion Consulting Services Singapore

Subject: Consultancy Services - Carriage of Phosphoric Acid in Stainless Steel Ship Tanks

We are a ship-owner with a fleet of stainless steel ocean-going tankers.

Our ships carry Phosphoric Acid cargo from time to time. We would like to know whether a particular grade of Phosphoric Acid is suitable for our stainless steel tankers. We are not able to provide the phosphoric acid sample to you. However we can provide the specifications of phosphoric acid to you. For example:

P ₂ O ₅	49.0 - 51.0
Sp. Gr	1.65 - 1.67
Fe ₂ O ₃	min 0.65 pct
Al ₂ O ₃	min 0.8 pct
MgO	0.45 - 0.55
CaO	0.15 - 0.25
K ₂ O	0.06 - 0.08
Na ₂ O	0.7 - 0.95
SO ₄	max 4.0 pct

F max 0.8 pct

Cl max 200 ppm

Solids max 1.0 pct

Temp max 45 deg C

Total voyage time about 12-15 days.

Question – can this grade of Phosphoric Acid be carried on our ship cargo tanks made of 316L 2.1% Mo and of 316L 2.7% Mo?

If it cannot be carried because of certain parameters out of limits, please advise the max limits allowed and if the temp is too high, what the max temp allowed?